

## Message Notes

To access today's message notes on your mobile device, visit the Sunday Resources section in the Connect tab in CLA's app.

## Registration

Name \_\_\_\_\_

Phone \_\_\_\_\_  home  cell

Email \_\_\_\_\_

### I would like to register for:

\_\_\_ Forever Young Dinner, January 16, 2018

\_\_\_ Side Dish \_\_\_ Salad \_\_\_ Dessert

Please place in the offering or Welcome Center Communication Drop.

## This Week at CLA

### Communion

#### Sunday, January 14

- 9:00 AM Sunday Morning Life Groups
- 9:00 AM Discover Groups (Rooms 705 & 706)
- 9:00 AM Threads Clothing Ministry Open (9:00 AM-12:00 PM)
- 9:30 AM Membership Class / Session 2 (Room 300)
- 10:30 AM Sunday Morning Life Groups
- 10:30 AM Discover Groups (Rooms 705 & 706)
- 11:00 AM Fusion Middle School Service
- 12:30 PM Fusion Family Gathering
- 6:00 PM Night of Worship & Prayer

#### Monday, January 15

- 9:00 AM Prayer Room Open (9:00 AM-4:00 PM / Room 709)
- 6:00 PM The Landing (Student Center)
- 6:00 PM Basketball League
- 6:30 PM Praise and Intercessory Prayer (Room 710)
- 7:00 PM Celebrate Recovery

#### Tuesday, January 16

- 9:00 AM Prayer Room Open (9:00 AM-4:00 PM / Room 709)
- 9:00 AM Threads Clothing Ministry Open
- 9:30 AM "Tuesdays Together" (Bible Study for Women)
- 6:30 PM Knit, Crochet & Give Away (Room 408)
- 6:30 PM Anchored (Women's Life Group - Plaza)
- 6:30 PM Celebrate Recovery Groups
- 7:00 PM Open Adult Volleyball

#### Wednesday, January 17

- 9:00 AM Prayer Room Open (9:00 AM-4:00 PM / Room 709)
- 7:00 PM Wednesday Night Life Groups
- 7:00 PM Kids' & Students' Services
- 7:00 PM DISCOVER (Room 703)
- 7:00 PM FOCUS (Room 704)
- 7:00 PM DISCOVER (Room 706)

#### Thursday, January 18

- 9:00 AM Prayer Room Open (9:00 AM-4:00 PM / Room 709)
- 10:00 AM Prayer (Room 710)
- 6:30 PM CLA School of the Bible (Plaza)
- 7:00 PM Anthem (College Age)

#### Friday, January 19

- 9:00 AM Prayer Room Open (9:00 AM-4:00 PM / Room 709)
- 5:00 PM She Creates
- 7:00 PM Family Movie Night

#### Saturday, January 20

- 9:00 AM JBQ League Meet (Junior Bible Quiz)
- 9:00 AM CLA Propel Women (Room 304)
- 9:00 AM The Giving Circle (Room 300)

## Leadership Team

**Shane Wilson**, Lead Pastor

### Executive Pastors

**Scott Ball**, Executive Pastor

**David Richards**, Executive Pastor/Kids Pastor

### Pastors & Directors

**Dan Baker**, Dramatic Arts Pastor

**Tom Britton**, Executive Pastor of Counseling & Recovery

**Rob Gillen**, High School & College Age Pastor

**Candace Harris**, Adult Ministries Pastor

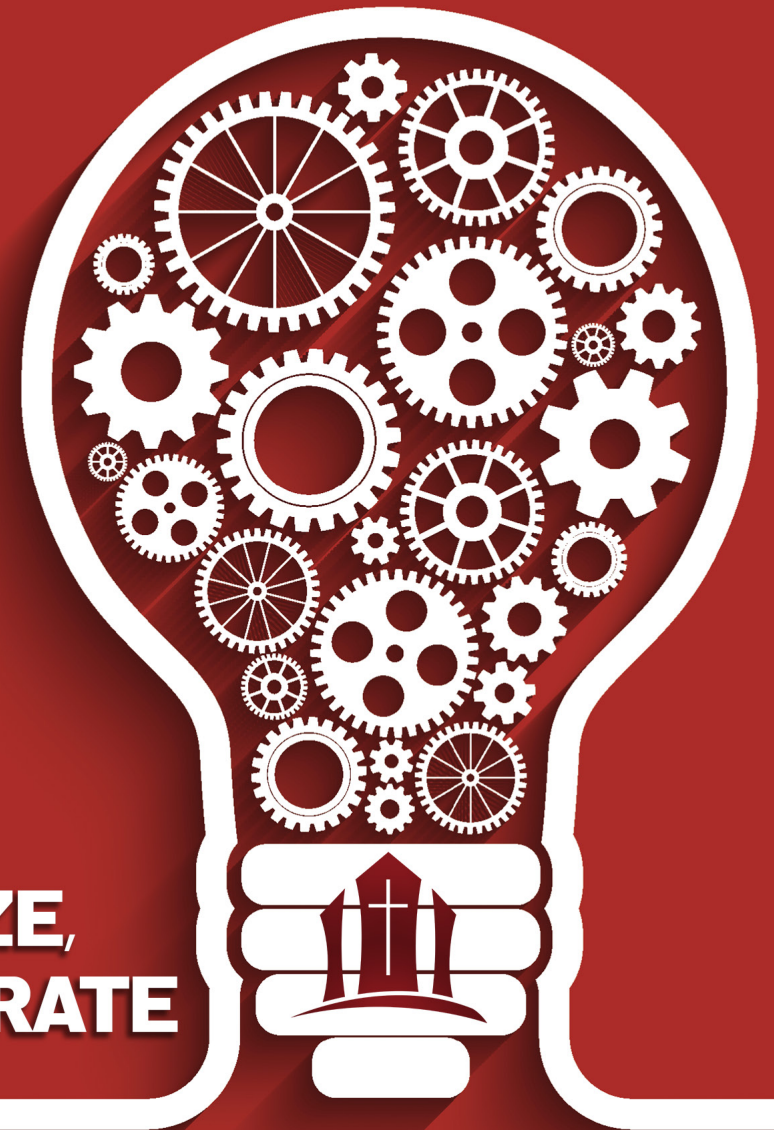
**Lee Hyman**, Pastoral Care Pastor

**Nick Pine**, Middle School Pastor

**Ken Ulrich**, Executive Director of Resource Ministries

**Kristian Walker**, Executive Pastor of Worship Arts

January 14, 2018



**REFLECT,  
REPRIORITIZE,  
and RECALIBRATE**

**CHRISTIAN LIFE  
ASSEMBLY**

**clacamphill.com • 717-737-6560 • 2645 Lisburn Road • Camp Hill PA 17011**

## New to CLA?

**Thanks for being with us today!** Please stop by either Welcome Center for a new guest gift, a coupon for our café, and answers to your questions about CLA.



### Discover

**DISCOVER** is our discipleship process that will help you GROW in the seven essential attributes as a follower of Christ, FOCUS on God's design and plan for your life and REACH the world. Stop by the Ticket & Media Center to pick up a copy of the Discover devotional book. Questions? Contact us at [discover@clacamphill.com](mailto:discover@clacamphill.com), or visit the Discover Kiosk in the Lobby. **Join us for the Next Meet and Greet followed by Next on January 21 at 8:45 or 10:15 AM. Pre-registration is helpful, but not required.**



### Grow

**Celebrate Recovery** is a place where one can experience God's healing power over the habits, hurts and hang-ups in our lives. Join us on Monday evenings at 7:00 PM in The Plaza and find hope, encouragement and, most importantly, a stronger personal relationship with God and others. Registration is not required.

**Forever Young Dinner** Tuesday, January 16, 2018 at 6:30 PM in the Christian Life Center featuring a hymn sing with Anna Emrich. The menu is chicken corn soup, Sloppy Joe sandwiches, crackers and applesauce. To register, fill out the Bulletin Registration, or visit the Forever Young Kiosk in the Lobby.

**Threads + Breads** Open Sundays from 9:30 AM-12:00 PM or visit [clacamphill.com](http://clacamphill.com) for additional times. Accepting dry (non-perishable) goods: peanut butter, cereals, pasta, canned goods, etc. (No bulk sizes please.) Please drop off donations in the Christian Life Center lobby to help those in our CLA family. For more information, contact [threads@clacamphill.com](mailto:threads@clacamphill.com).



### Focus

**Connections at CLA** One of our main goals is to help every person that walks through our doors feel welcome and know that they belong! If you would like to know more about "test driving" in the hospitality area, contact Tori at [tmontgomery@clacamphill.com](mailto:tmontgomery@clacamphill.com).

**Night Worship and Prayer** every Sunday at 6:00 PM in the Sanctuary. Families are encouraged to attend together to experience and grow in prayer together!

**At CLA, our intention is to help you** GROW in your relationship with Jesus; FOCUS your time and energy on your God-given strengths to impact the world; and REACH others for Him. We hope you'll join us on this journey!

**Water Baptism** Sunday, February 4 during both morning services. If you would like to be baptized or if you're interested in learning more about baptism, attend the upcoming baptism class on Wednesday, January 31 from 6:15-6:45 PM in Rooms 702 and 704. Register at [clacamphill.com/registration](http://clacamphill.com/registration). Questions? Contact Kim at 717-635-7223 or [kminnich@clacamphill.com](mailto:kminnich@clacamphill.com).

**Tuesdays Together** Bible study for women begins January 16 from 9:30-11:30 AM. Join us for godly friendships as we apply God's Word to our circumstances. Pre-registration at [clacamphill.com/registration](http://clacamphill.com/registration) is required for child care. Contact [women@clacamphill.com](mailto:women@clacamphill.com) with questions.

**The Landing** is a new youth recovery ministry for teens from ages 13-19. Come join us Monday evenings in the Youth Center at 7:00 PM and experience a faith-based, Christ-centered experience of healing and hope for teens struggling with life's hurts, habits and hang-ups. Registration is not required.

**CLA School of the Bible** offers comprehensive Bible education to all adult participants. To register or for more information, visit [clacamphill.com/registration](http://clacamphill.com/registration). No child care is available.

**Life Groups have begun!** Stop at the Life Groups Kiosk to pick up a GROW brochure for current opportunities, or email [lifegroups@clacamphill.com](mailto:lifegroups@clacamphill.com).

**FOCUS** starts Sunday, February 18 and will introduce you to all of the unique personalities God has created, while helping you to discover your own God-given, passion-based gifts and talents. Register online at [clacamphill.com/registration](http://clacamphill.com/registration), or contact [discover@clacamphill.com](mailto:discover@clacamphill.com) with questions.

**Prayer** does not equip us for the greater work; prayer is the greater work. Join us for prayer on Mondays at 6:30 PM and Thursdays at 10:00 AM in Room 710. For more information, please contact [prayer@clacamphill.com](mailto:prayer@clacamphill.com).

## Family Ministries



**Parents Night Out** On Friday, February 16 we're offering a PNO! Register your children (six weeks to grade 5) at [clacamphill.com/](http://clacamphill.com/) registration at least two weeks prior to the evening. The cost is \$7 per child with a max of \$25 per family.

**Family Movie Night** Friday, January 19 in Kids Town at 7:00 PM. This is a great way to invite friends from the workplace, school or your neighborhood. Popcorn is FREE! Concessions will be available. Bring your blankets or lawn chairs!



**CLA Kids/Infants-Grade 5**  
[clacamphill.com/kids](http://clacamphill.com/kids)

**Derby Lock-in** February 9-10. All Royal Rangers and their friends are welcome to participate! The cost is \$15 per person or \$13 without a car. All boys must be accompanied by an adult male (not their leader). Deadline is February 7. Questions? Email Janine at [royalrangers@clacamphill.com](mailto:royalrangers@clacamphill.com).

**Kids Breakaway Retreat** March 2-4 for children in grades 2-5. Total cost is \$119, with a \$30 NON-REFUNDABLE deposit due no later than Sunday, February 4, 2018. Register online at [clacamphill.com/registration](http://clacamphill.com/registration), or pick up a registration form at the Kids Town News Stand or the Family Ministries Kiosk in the Lobby.



### Reach

**El Salvador May 19-26** Join us as we partner with King's Castle on this medical missions trip. Doctors, dentists and eye professionals are needed. Contact Curt at [missions@clacamphill.com](mailto:missions@clacamphill.com). **Register before February 19!**

**REACH** begins Wednesday February 7 in Room 706. Learn to be inviting and relatable to others while sharing the impact Jesus has had on your life! Questions? Contact [discover@clacamphill.com](mailto:discover@clacamphill.com).

**MOPS (mothers of preschoolers) and MOMSnext (mothers of school-aged children)** Every mom needs support. Winter/Spring semester will be various Fridays from 9:30-11:30 AM! Register at [clacamphill.com](http://clacamphill.com). Questions? Contact us at [women@clacamphill.com](mailto:women@clacamphill.com).

**Big Daddy Weave** Sunday, January 28 at 7:00 PM. One of Christian music's most loved and respected artists and a mainstay on the radio, the band achieved their most recent hit single with "The Lion and The Lamb." Ministry is at the forefront of every recording and concert! Tickets are available at [ticketfly.com](http://ticketfly.com).

**All Rangers Section Winter Day** Saturday, January 27 from 7:30 AM-5:00 PM at Shrewsbury Assembly. Transportation available by contacting Janine Seilhamer Wednesday's in Room 323 by January 17. Cost is \$15. Questions? Contact [royalrangers@clacamphill.com](mailto:royalrangers@clacamphill.com).



**Middle School/Grades 6-8**

**Middle School Students** have a blast at Fusion! Join us Sundays at 9:00 AM for Life Group, 11:00 AM for service and Wednesdays at 7:00 PM for Student Tribes.



**High School/Grades 9-12**

**The Movement** is a dynamic Wednesday night experience where students come together for live music, skits and an exciting message! Join us Wednesdays at 7:00 PM! On Sundays, join us at 9:00 AM for Life Group teachings in the Student Center.



**College Age/Ages 18-25**

**Anthem**, a ministry for young adults ages 18-25, meets on Thursdays at 7:00 PM in CLA's Student Center! Doors open at 6:00 PM for a time of worship and teaching. Find us at [BeTheAnthem.com](http://BeTheAnthem.com). Child care is available.

**Worship Choir** is looking for singers to join us for our winter season. Rehearsals begin Wednesday, January 31 at 7:00 PM. The choir will sing in the 9:00 and 11:00 AM Sunday morning services starting February 4. For more information, contact [choir@clacamphill.com](mailto:choir@clacamphill.com).

**"Celebrate the Love" Valentine's Gala** Saturday, February 10 at 5:30 PM in the Christian Life Center. Register today for this delicious Italian dinner, hilarious and inspirational evening with Jon and Amanda Jodon as they share on "The Power of Love." Treat your sweetheart to this elegant Valentine's Day event for only \$35/couple. Child care is available on a space available basis with your pre-registration at [clacamphill.com/registration](http://clacamphill.com/registration). Questions? Email [marriedlife@clacamphill.com](mailto:marriedlife@clacamphill.com).

**Sympathy** We extend our sympathy to Ron Sanderson on the loss of his stepfather.